

With all accessories

With Bunker's Tragen the possibility of purchasing a screed conveyor with all accessories is no longer a dream. Our machine's accessories are: hoses, hose holder, tripod, cleaning kit, user's manual and a tool case with essential spare parts.



Loading skip with scraping blade



Automatic greasing system



Perrot coupling



Screw coupling

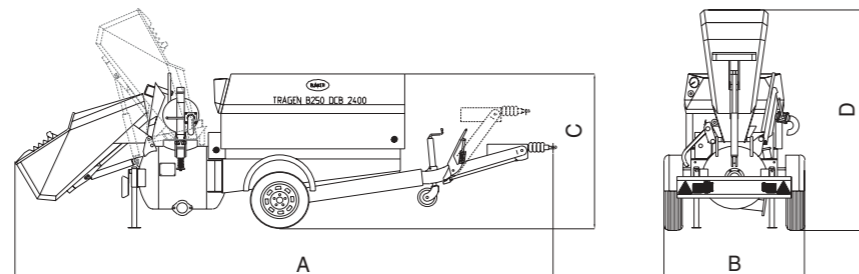
Technical features

	B250 DCB 2400	B250 DCB 4000	B250 DCB 5200	B250 DC 2400	B250 DC 4000	B250 DC 5200
Diesel engine	Deutz	Deutz	Deutz	Deutz	Deutz	Deutz
Model	F2M2011	F3M2011F	F3M2011F	F2M2011	F3M2011F	F3M2011F
Power	21.6 KW	32.5 KW	36.0 KW	21.6 KW	32.5 KW	36.0 KW
Compressor	Atlas Copco	Atlas Copco	Atlas Copco	Atlas Copco	Atlas Copco	Atlas Copco
Air flow	2400 l/min	4000 l/min	5200 l/min	2400 l/min	4000 l/min	5200 l/min
Working pressure	7 bar	7 bar	7 bar	7 bar	7 bar	7 bar
Vessel capacity	270 l	270 l	270 l	270 l	270 l	270 l
Output	3m³/h	4m³/h	5m³/h	3m³/h	4m³/h	5m³/h
Max granulometry	20 mm	20 mm	20 mm	20 mm	20 mm	20 mm
Conveying distance						
Horizontal*	80 m	160 m	180 m	80 m	160 m	180 m
Vertical*	50 m	80 m	100m	50 m	80m	100m
Diameter vessel outlet	60-65-100 m	60-65-100 m	60-65-100 m	60-65-100 m	60-65-100 m	60-65-100 m
Size						
Length (A)	5590 mm	5805 mm	5805 mm	4595 mm	4810 mm	4810 mm
Width (B)	1470 mm	1470 mm	1470 mm	1470 mm	1470 mm	1470 mm
Height (C)	1640 mm	1640 mm	1665 mm	1640 mm	1640 mm	1665 mm
Height (D)	2350 mm	2350 mm	2350 mm	1470 mm	1640 mm	1665 mm
Weight	1590 Kg	1750 Kg	1786 Kg	1470 Kg	1630 Kg	1670 Kg

Extra accessories

- Homologated towing bar with lights
- Automatic greasing system
- Scraping blade.

*Depending on material, consistency and hose diameter



TEK.SP.ED. srl

80025 Casandrino - NA - Italy
Via G. Falcone, 91
TEL. +39 081 5053621
FAX +39 081 8332973
info@bunker-teksped.com
www.bunker-teksped.com

Protect your investment

Bunker transporters resist the most conditions. All their parts undergo sand-blasting, varnishing and heat treatments.

These processes ensure the best protection for your investment and mean it will keep its value.



BUNKER

A technical assistance you can count on

When your Tragen will need a little bit of attention, you'll discover how easy and quick you can repair it. Thanks to its customer care technicians and spare parts stock, Bunker will guarantee minimal machine stoppage times.

Mixing
Pumping
Transporting

At the avant-garde

Tragen B250 DC

The brand new totally hydraulic floor screed conveyors



High productivity at low cost

The answer to the needs of all professional layers: a new generation of transporters designed according to the specific demands of the market and built to meet all the required regulations.

Tried and tested in the toughest conditions to achieve a high standard of efficiency and productivity.

With this machine you will be considered the avant-garde in your sector.

BUNKER



The Tragen B250 DC is the pump I was looking for



The Tragen mixes and pumps cork, sand, concrete, clay and so many other materials



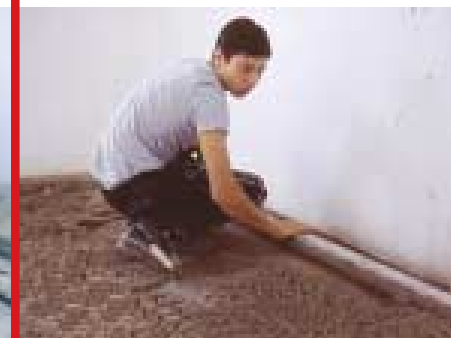
The scraping device facilitates loading the tank



The Tragen at work



The floor screed conveyed at the upper floors



Laying the floor screed



Easy to be towed

Tragen B250 DC

High productivity at low cost

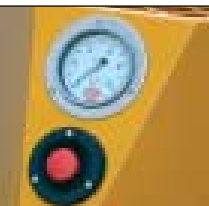


History

Once it was necessary to use cement mixers, wheelbarrows, cranes or other types of lifting machinery for floor screed.

This meant low productivity and hard labour.

For more than twenty years Bunker has contributed to the development and production of mixer-transporters. This machine means great savings in terms of transportation and manpower.



The right choice

The growth of the building sector determines an increase in the interests of professional floor screed layers in the floor screed sector. One cannot avoid an increase in competition and above all cannot avoid the regulations which must be conformed to on the building sites, that is why it is fundamental to choose the right machine.



Easy conveying

Thanks to the powerful compressors it is possible to mix and convey from 30m³ to 40m³ to a height of 100m within a range of 180m. You can pump the most varied mixes and floor screed materials used today in modern construction: pure and bound expanded clay, polystyrene, cork, fine gravel, normal and finer concrete with a grain size maximum of 16mm, light concrete and sand.

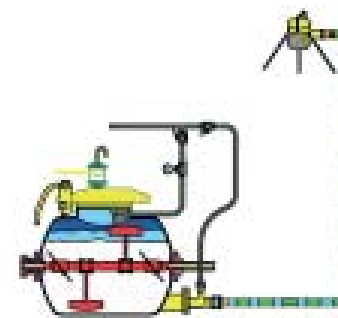
It is not necessary to move the machinery around even on the biggest building sites. Everything is done with great ease.

A new series

The TRAGEN B250 DC series represents a new generation of floor conveyors. Driven by the new DIESEL DEUTZ 3 cylinder engine and the new ATLAS-COPCO 4000 and 5200 litre per minute compressors. They are equipped with a scraping blade and skip which ensure high productivity and low overheads.

How does it work?

The floor screed which is loaded either manually or using the skip is mixed quickly by the internal blades of the mixer, subsequently the flow of compressed air pushes it through the hoses to the tripod.



Mixing – not to be underestimated

With the quick-dry floor screeds, a perfect mixture of aggregates and binding agent must be guaranteed in order to achieve the best results and to have the fundamental chemical combination for low levels of humidity within a few hours. The form and number of agitator blades are studied for this reason.



Work freely

The tragen with a compressor is a mobile pumping unit which does not need electricity. It can be hauled along any road, even on difficult roads and only two people are needed to set up the machine on the building site.

New features

This machine has to meet particular demands. It must deal with heavy duty work and work with any type of mixture, even dry types with high grain size mass. Since the beginning of the Tragen project Bunker has taken into consideration consumers and retailers. This attention to your needs has led to the development of new and interesting features which include: a new style compressor, a new diesel engine, a new hood and a new modular structure which has allowed the addition of numerous optional features. Let's find out what they are.



With loading skip

The transporter of this generation

The hood's large opening facilitates controls and maintenance

A new compressor element
Atlas-Copco which reduces absorption power by 12% has been chosen especially for the new Tragen DC.

The controls are grouped together on one panel which is protected by another transparent panel, this guarantees safety and makes it easy to use.

A special varnishing process ensures maximum protection.

Auxiliary valves allow the use of pneumatic tools.

An axle with torsion bars with oscillating arms guarantee maximum stability.

Internal sound absorbent coating controls the noise of the machine to conform to regulation CEE 84/533.

The Tragen's low noise levels it can be used near hospitals, schools and residential areas.

A new quiet and environment friendly
Deutz engine has been used to guarantee reliability, tested by the manufacturer it meets the toughest needs.

The engine and compressor are protected from dust and dirt by a single, two stage, high performance filter. The filter has an indicator which monitors blockage and obstruction and indicates the need to clean or replace the relevant parts.

The fuel tank is sufficient for an entire work shift and guarantee maximum productivity.

The automatic speed regulator constantly adapts the turning of the engine to the quantity of air required. This has many advantages: it saves energy, reduces fuel consumption and allows continuous air flow at a constant pressure.





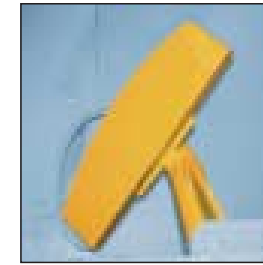
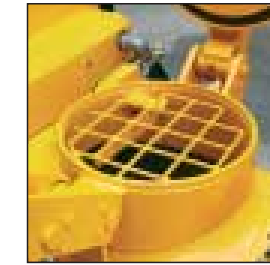
The heart of the machine

Unlike an electric engine to which we would pay little attention, the diesel engine is the heart of the whole system of this machine, that is why we chose a Deutz, in particular the latest model, the 2011(F3M2011 - F2M2011). The main feature of the new version is the cooling of the cylinders and cylinder heads with lubricating oil by a large cooler designed to maintain the engine's temperature. This system reduces the machine's noise levels. The performance of the F3M2011 - F2M2011 means the Tragen B250 DC is safely started.

More power and torque

Less fuel consumption

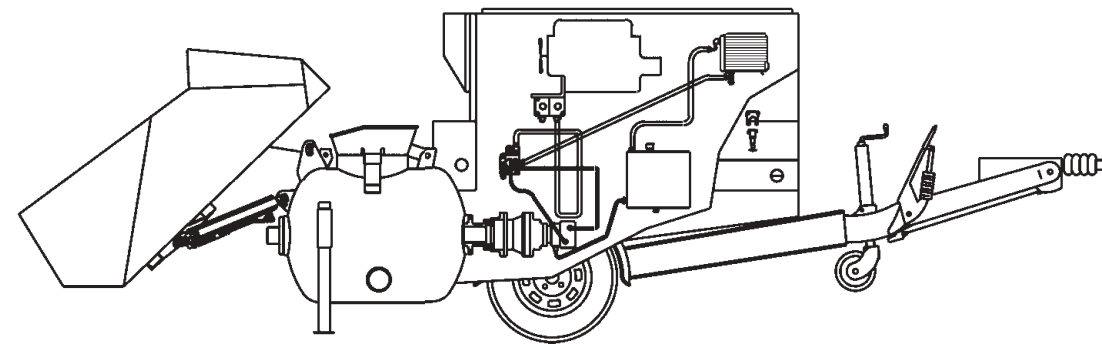
Less oil consumption



Strongpoints

The advantages of hydraulic drive

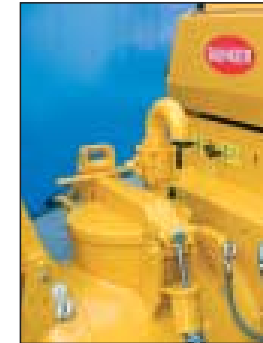
It is acknowledged that the use of oleodynamic drives means more control and less stress. It avoids using useless mechanisms such as joints, pulleys and belts, this guarantees an increased safety and eliminates maintenance. With Tragen B250 DC the mixer, skip and scraping blade are all hydraulically driven... a definite advantage!



Meeting safety standards

The vessel has been designed and tested to resist pressure and general wear and tear, it is prepared for different diameter hoses and is fitted with a protective grill which once open blocks the mixer.

The fast closing lid has a balance spring and a robust vent valve this safety feature stops it opening during use. Inside the machine the mixer shaft is supported by special bearings and resistant seals. The mixing blades are wear and tear resistant.



Maintenance and support

Whilst we did our best to meet your needs in terms of quality, performances and reliability, your machine will eventually require some attention. You'll discover how quick and easy it is to carry out the necessary operations. The large opening of the hood allows easy access to the machine. Bunker guarantees an after-sales service in Italy and abroad.



Compressor component

A new screw compressor with oil injection has been chosen especially for the Tragen B250 DC. This component produced by ATLAS-COPCO (world leader in the air compressor sector) has an asymmetrical profile modified to emphasize its superb fundamental characteristics.

